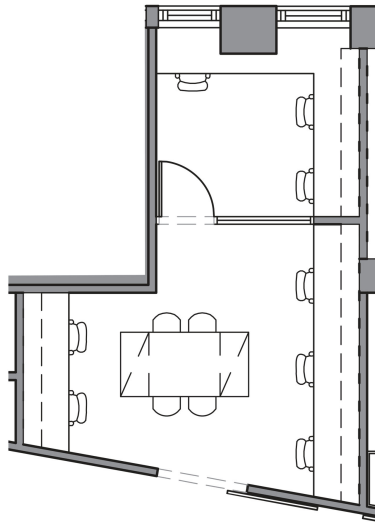
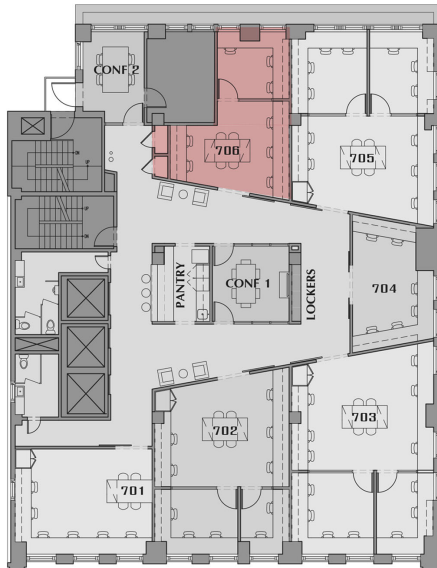


# SUITE 706



# FLOOR 7



# PROPOSAL for 8 Occupants

### Assumptions:

|                      |               |
|----------------------|---------------|
| Proposal Date:       | April 1, 2013 |
| Proposal Expiration: | April 8, 2013 |
| Move-In Date:        | May 1, 2013   |
| Term Length:         | 1 year        |
| Suite(s) #:          | 706           |
| Number of Occupants: | 8             |

### Recurring Monthly Fees:

|                                       |      |   |                |
|---------------------------------------|------|---|----------------|
| Suite Base Rental Rate <sup>1</sup> : |      |   | \$4,500        |
| Telephone Service <sup>2</sup> :      | \$75 | 8 | \$600          |
| Internet Service <sup>3</sup> :       | \$50 | 8 | \$400          |
| <b>Total Monthly Recurring Fees:</b>  |      |   | <b>\$5,500</b> |

### One-Time Set Up Fees

|                                    |      |   |                |
|------------------------------------|------|---|----------------|
| Setup:                             |      |   | \$500          |
| Telephone Configuration:           | \$75 | 8 | \$600          |
| Internet, Network Set Up:          | \$50 | 8 | \$400          |
| 24/7 Access Fobs                   | \$75 | 8 | \$600          |
| <b>Total One Time Set Up Fees:</b> |      |   | <b>\$2,100</b> |

### Refundable Service Retainer (Security Deposit):

|                                 |                 |
|---------------------------------|-----------------|
| 2 Times Monthly Recurring Fees: | <b>\$11,000</b> |
|---------------------------------|-----------------|

### Total Due On Signing of Agreement:

|                              |                 |
|------------------------------|-----------------|
| First Month's Fee:           | \$5,500         |
| One-Time Set Up Fees:        | \$2,100         |
| Refundable Service Retainer: | \$11,000        |
| <b>Total Due on Signing:</b> | <b>\$18,600</b> |

### Notes to Agreement:

- <sup>1</sup>Electric and Cleaning are included in Base Monthly Fee.
- <sup>2</sup>Includes Voicemail, Local and Long Distance Service.
- <sup>3</sup>Includes Network Support and WiFi.